



LEAD IN PAINT STUDY JAMAICA'S EXPERIENCE

*Regional Workshop for Latin America and The Caribbean of The
SAICM GEF Project-Lead in Paint Component*

12-13 June 2019

Panama City, Panama

**Presented by: The Caribbean Poison Information Network
a member of IPEN**

Presentation Outline



- * Stakeholders group
- * During Study: Challenges
- * Study Results: Summary
- * Post-Study
- * Recommendations

STAKEHOLDER MEETING



MINISTRY OF
ECONOMIC GROWTH
AND JOB CREATION



MINISTRY OF
**HEALTH &
WELLNESS**



MINISTRY OF INDUSTRY, COMMERCE
AGRICULTURE & FISHERIES

ure



DURING STUDY



Challenges

- * :- Some paint shops requested money for surveyors to access information for paint brand and labels.
- * :-Some paint shops refuse to participate in the brand survey.

SUMMARY OF STUDY RESULTS

Total Lead Content for Solvent Based Paints

IPEN

for a toxics-free future

Paint Brands Tested	Number of Paints	Colours	Lead Content (ppm)
15 different brands majority manufactured in Jamaica and others in T&T and USA	31 decorative 4 anti- corrosive	Yellow White Red	<90ppm
1 Brand , USA	1 Industrial paint	Yellow	150,000 ppm

*Reference Point: <90ppm is the standard (UNEP,2019)

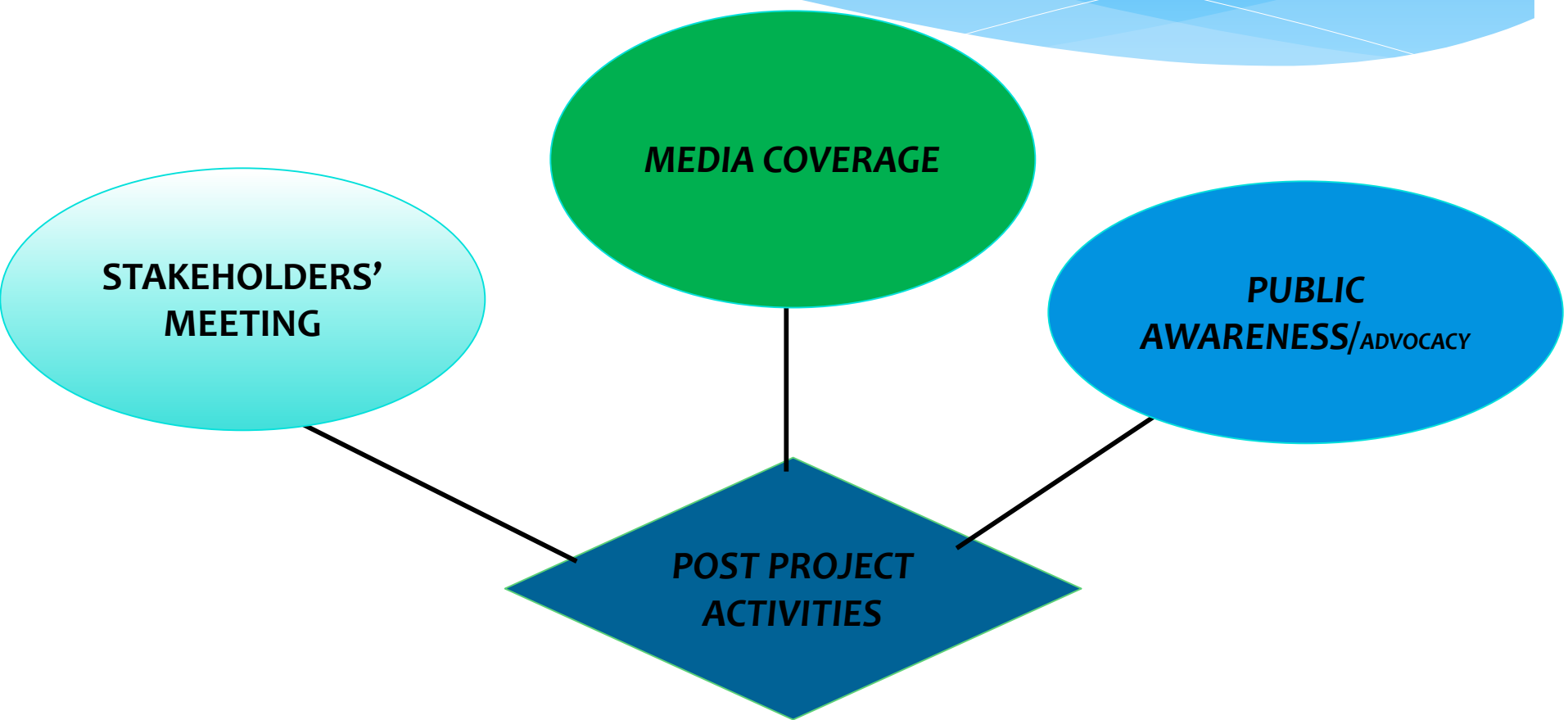
ppm:- is the concentration of something in water/soil (e.g.1miligram/litre of water).

STUDY: RECOMMENDATIONS



- * Government and governmental agencies
- * Paint Industry
- * Householders/consumers
- * Organizations and professional group

POST PROJECT



LESSONS LEARNT FROM STUDY



The lead in paint study in Jamaica has given prospect for additional strategy in gathering relevant information for a similar type study to be done in other Caribbean countries



PROSPECTIVE RESEARCH QUESTIONS



- ✓ Where do locals purchase the paints they use in residence?
- ✓ What types of paints are used in homes?
- ✓ Is there a practice of mixing different types of paints?
- ✓ What types of paints are used in schools? (decorative or industrial or both)

CULTURAL PAINTING PRACTICES



Figure 1: Christmas Painting at Home



Figure 3: Labour Day Project



Figure 2: Labour Day Project

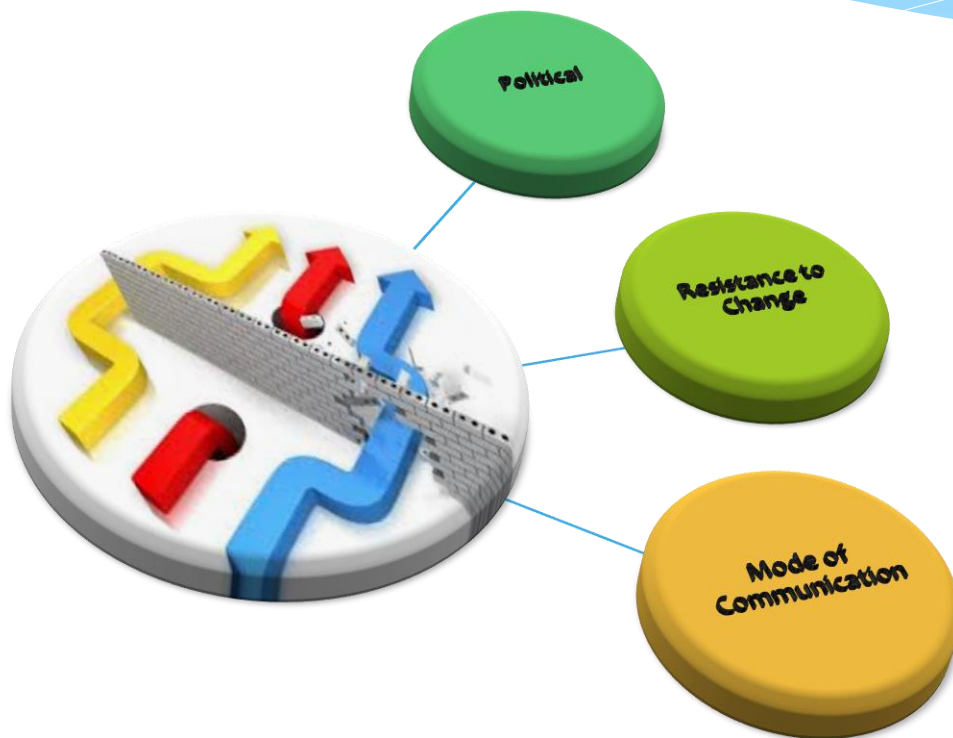


Figure 3: Renovation of Allman Town Primary School

POTENTIAL BARRIERS



THE IMPLEMENTATION OF A LEGAL FRAMEWORK FOR LEAD IN PAINT



Recommendation



A move to have a law to ban **ALL** lead in paint will help Jamaica in the following way:

- ✓ Prevent any ad hoc addition of lead to paint should manufacturers feel the need to
- ✓ Prevent the paint industry from selling paints manufactured from other countries that contain lead.

Recommendation



- ✓ Create an environment for the monitoring of local and imported paints in the country
- ✓ Ensure that consumers are aware of their rights to information on paint content.
- ✓ Protect the public's health from exposure to **ALL** lead through paint.

FURTHER STUDY



A lead in paint study is recommended for other countries in the region.



REFERENCES



Jamaica Information Service, (2015). *Labour Day Dignity Community and Solidarity*
<https://jis.gov.jm/features/labour-day-dignity-community-solidarity/>

Jamaica Information Service, (2015). *Jamaica Christmas Customs*
<https://jis.gov.jm/features/jamaican-christmas-customs-2/>

Jamaica Information Service, (2016). *Renovation Carried out at Allman Town Primary*
<https://jis.gov.jm/renovation-works-carried-allman-town-primary/>

Perkins K.A. et al (2008), *Political Leadership and development: Assessing the Jamaica Experience*
https://www.jstor.org/stable/27866541?seq=1#page_scan_tab_contents

[ONLINE DOCUMENT AT IPEN](#)

<https://ipen.org/documents/lead-solvent-based-paints-household-use-jamaica>

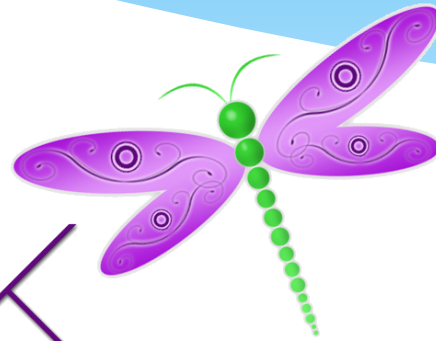


For additional information contact:

Sara Brosché, PhD
IPEN Science Advisor
Global Lead Paint Elimination
Campaign Manager
Phone: +46 31 7995900
E-mail: sarabrosche@ipen.org
Skype: sara.ipen

Jeiel Guarino
Global Lead Paint Elimination
Campaigner
Phone: [+46 31 7995930](tel:+46317995930)
E-mail: jeielguarino@ipen.org
Skype: jeiel_guarino

Sherika Whitelocke-Ballingsingh
Poison Information Coordinator
The Caribbean Poison Information Network
University of Technology, Jamaica
237 Old Hope Road
Kingston 6
Phone: +8769271680 (ext 2300)
E-mail: sballingsingh@utech.edu.jm



THANK
YOU . . .

Gracias





Any
Questions